



Walsh's Allcare Pharmacy Visual Guide



Visiting Walsh's pharmacy in Blarney

This guide will help you know what to do and what to expect when you visit our pharmacy.



Arriving at our Pharmacy

When you arrive at our pharmacy you will see our shop with handrails outside. We have a green cross outside.



Parking outside Pharmacy

There is parking outside with 1 wheelchair space outside the Post Office next door.

Mondays are quieter in the carpark.

Mid morning can be quieter In the pharmacy



Entering the pharmacy

When you to come into the pharmacy we have double glass doors. You will need to push the right hand door inwards or you can pull it outwards. It might be a little heavy and make a brushing noise when opening.



Seeing the staff

You will see some staff who are here to help you. We are happy to see you and can help answer any questions



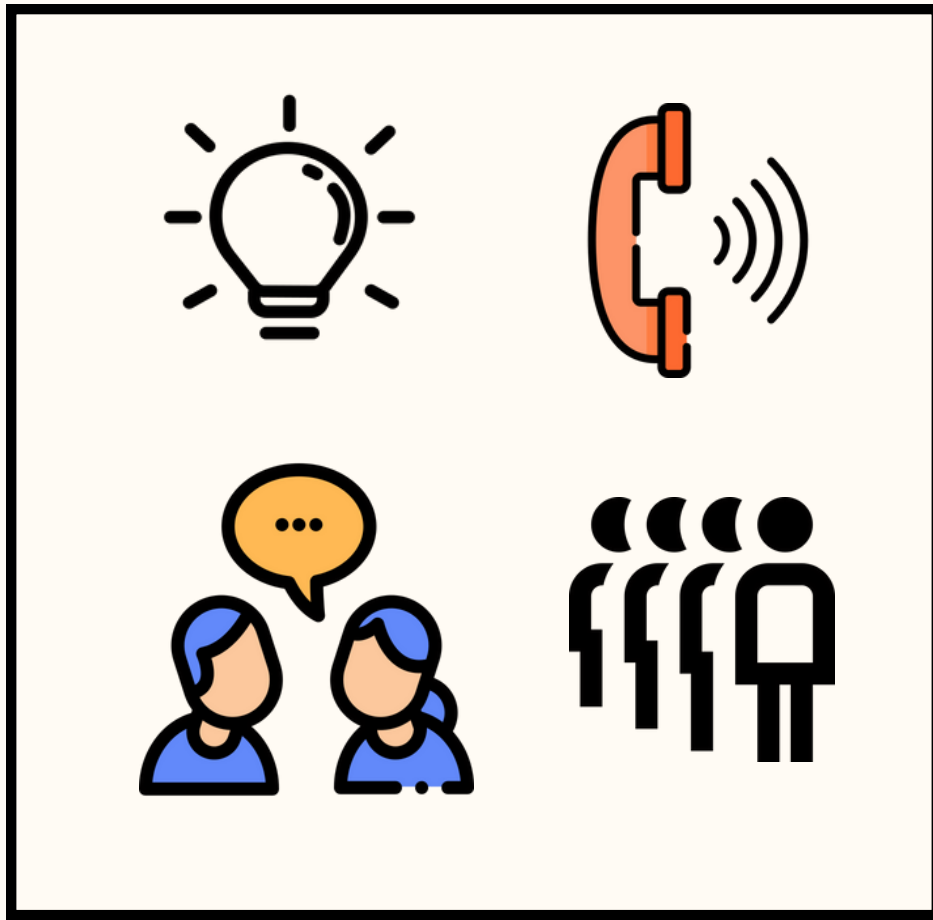
The pharmacy layout

Inside the pharmacy you will see a counter with the tills and some products.



We have shelves with products for sale
that you can look at.

There is good space to walk around.
We also have a consultation room if you
want to talk in private to the pharmacist.



Sensory information

The pharmacy might be busy at times. It can be brightly lit, with a que of people sometimes. The phones can be ringing and there can be people waiting and talking.

If you feel overwhelmed we have a consultation room that is quieter to wait in.



Picking up or dropping off prescriptions

If you need medication, you will go to the counter to speak with the pharmacist or staff. We might need to get some information about you and take the prescription. You might be asked to come back in awhile if we need to get it ready. This is normal to be asked to come back



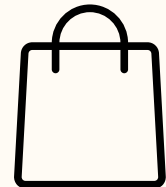
Shopping for items

We have vitamin supplements, first aid, dental, skincare, beauty products, baby, women & men's products and we also have gifts. You might like to browse in our pharmacy to look at products that you need or interest you. You can always ask us for advice if you need too.



Paying for items

When you are ready to pay you can pay cash or card at the counter. We can give you a bag to carry your items.



Collecting medicines

When you come to collect your prescription medicines we will ask you your name and address. We will then hand you your prescription medicines.



Leaving the pharmacy

When you are finished you can leave the pharmacy through the same doors you came in.

We hope that this visual guide was helpful.
If you have any feedback or recommendations on
how we can improve this visual guide - please
email:

autismfriendlyblarney@gmail.com

or

walshblarney@allcarepharmacy.ie

Thank you!

