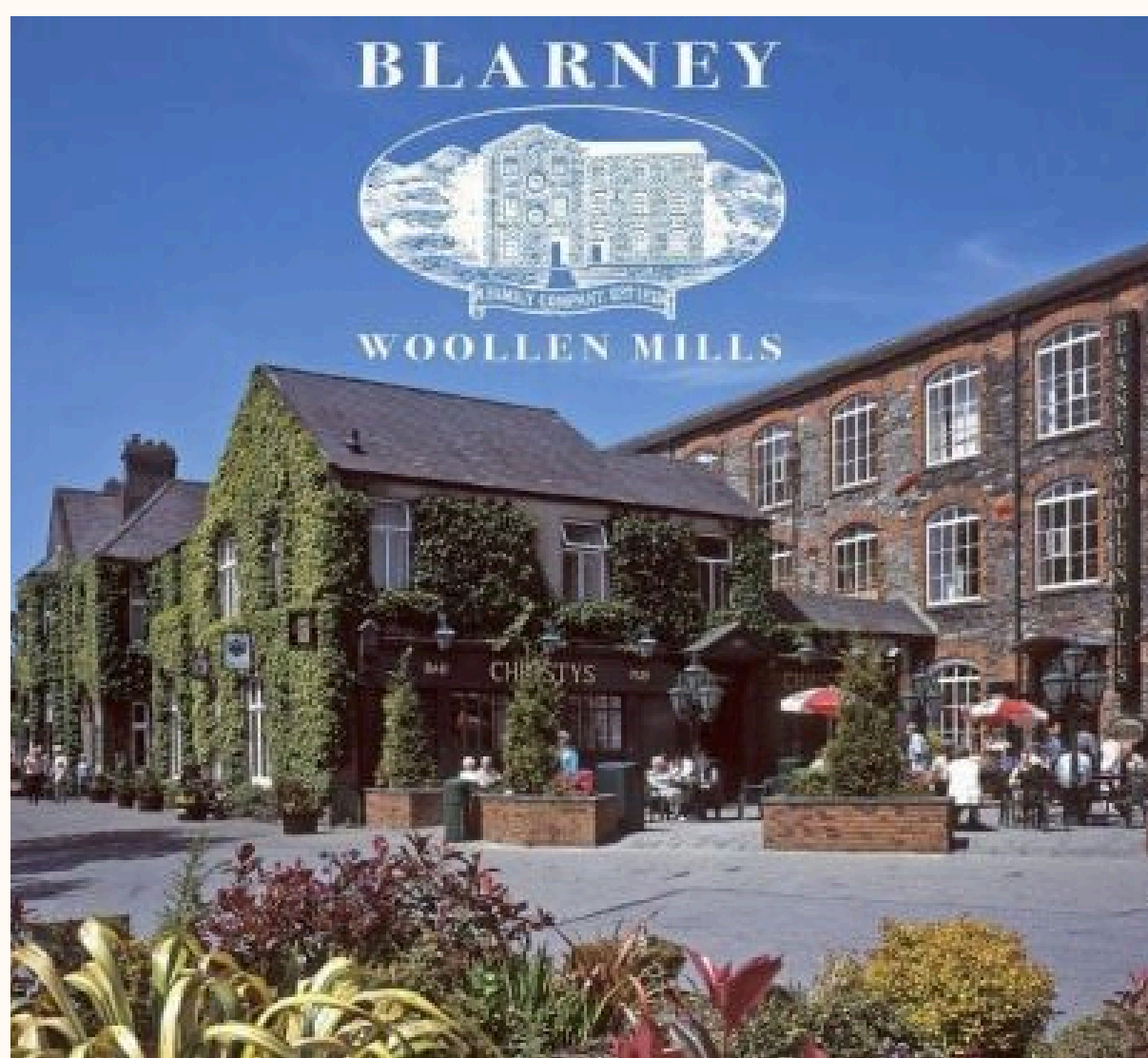




Magical Blarney 2025

Santa Visit



This guide will help you know what to do and
what to expect when you visit Santa's at
Magical Blarney



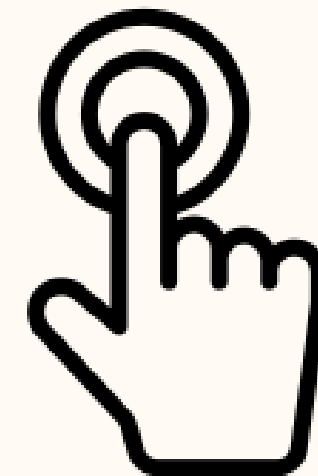
There is plenty of parking outside the building. You can enter through these doors. There will be Christmas decorations and music playing outside.



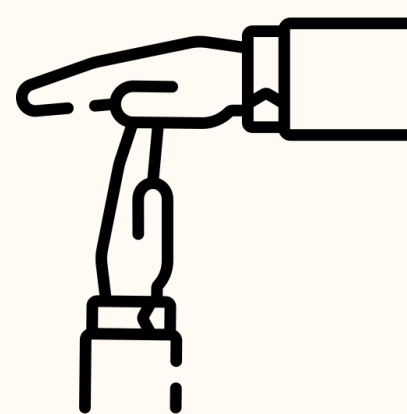
This is where you can check in.
The staff will be expecting you and happy to
welcome you. You can ask any staff member
for assistance.



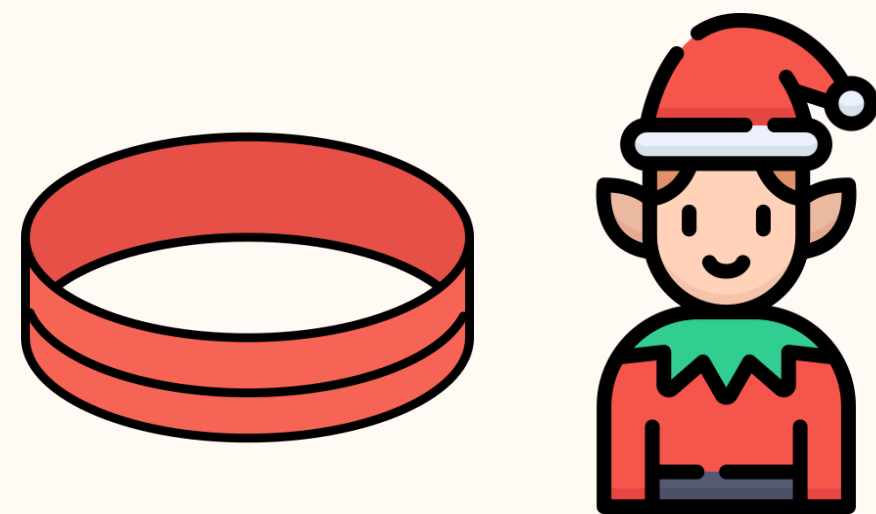
This is the 'Elfator' that will bring you up to Santa's Cabin. You must press the button and wait for the doors to open.



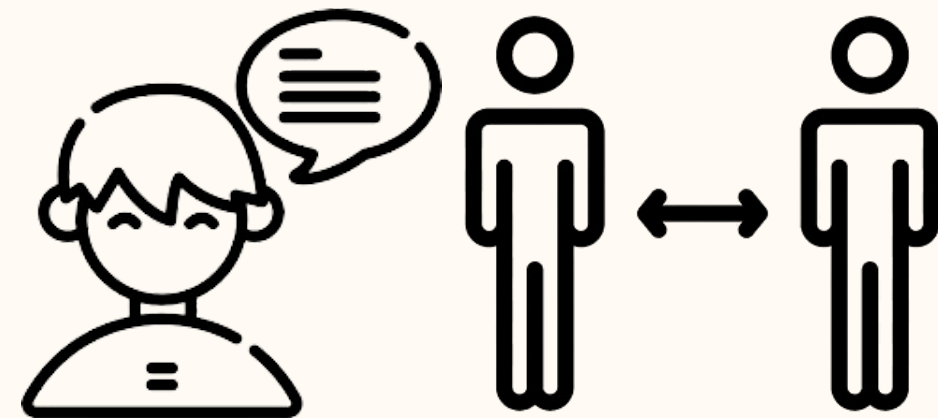
When you are inside the Elfator, Press Number 2. The doors will close and the Elfator will bring you to where Santa's Magical cabin is.



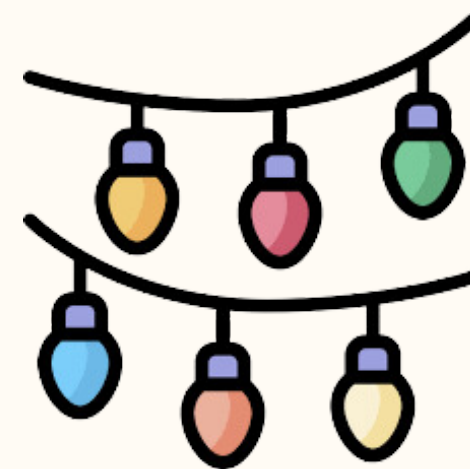
When the Elfator doors open - you will see this sign. There is a quiet sofa area to the right. You can sit and take a break here if you wish.



This is where you enter Santa's cabin. You will meet a staff member who will give you a special bracelet. You might need to wait in a queue. If you find this difficult, let the staff know and they will offer you another option.



You will be introduced to an elf. They will be happy to meet you and answer any questions. They will guide you through the door and into Santa's Magical Cabin.



There will be lots of fairy lights and beautiful pictures on the walls. There will be softly playing christmas music.

There will be lots of interesting things for you to look at.



Your elf will show you some of the magical rooms
in Santa's cabin.

You can take your time and look around.

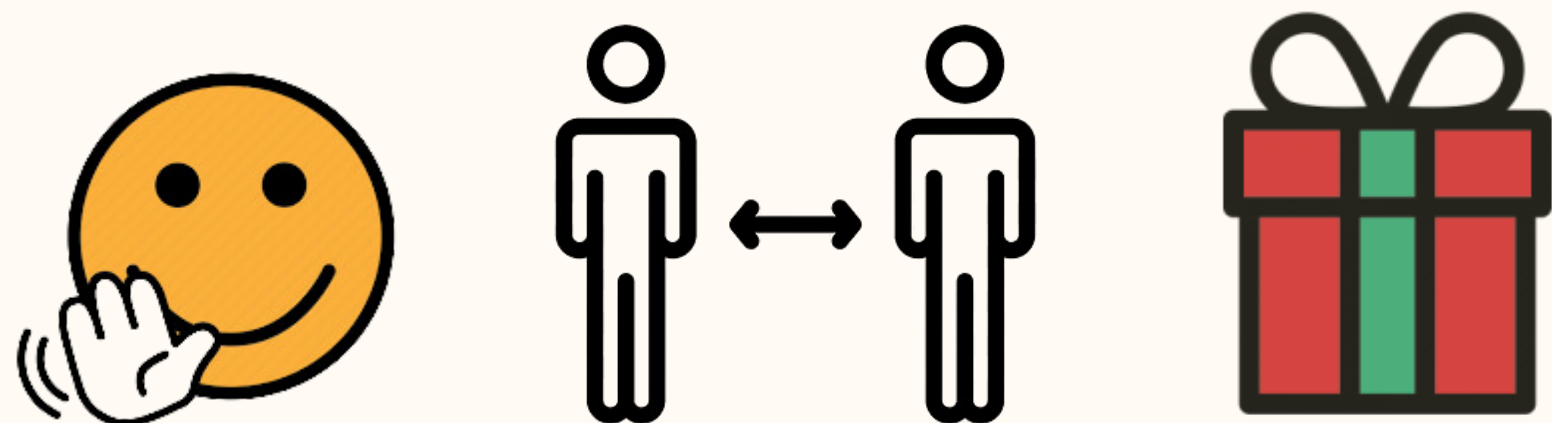
In one room, your Elf can will check if you are on
Santa's nice list.



In another room, you will meet Mrs Claus and you can help to make Reindeer Food.

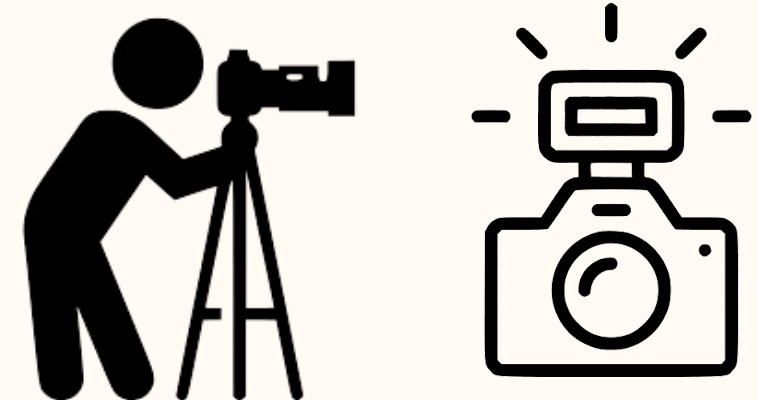


You can touch and mix the Reindeer Food. You can bring a bag of food home with you to leave out for Rudolph and the other reindeer on Christmas eve.

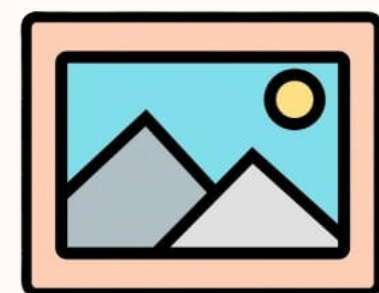


Next, you will meet Santa Claus.

He will be sitting on his chair and happy to see you. You can ask Santa questions. You can stand close or keep your distance. Santa will be glad you came to visit him and will have a gift for you!



Santa's friend will be in the room with Santa. He is a photographer and can take a nice photo of you with Santa. He will have a camera and it will make a flash.

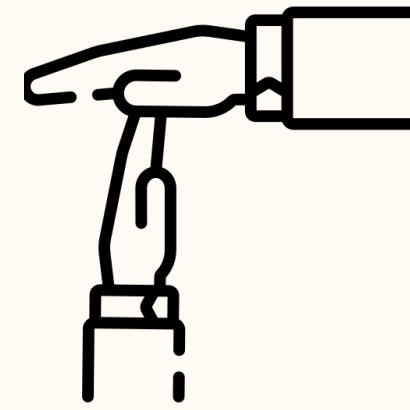


When you are finished meeting Santa, you will be given your photograph.

Your visit is now finished.

You can leave through the curtains.

You will be back in the area where you started.



You can take a break for a moment in the quiet area before you leave if you need to



You can take the Elfator down to the ground floor by pressing 0. You will exit through the same doors you came in.

**Thank you for visiting Santa at
Magical Blarney**



This Visual Guide was made by Autism Friendly Blarney.
You will find more information about us on our website
www.autismfriendlyblarney.com