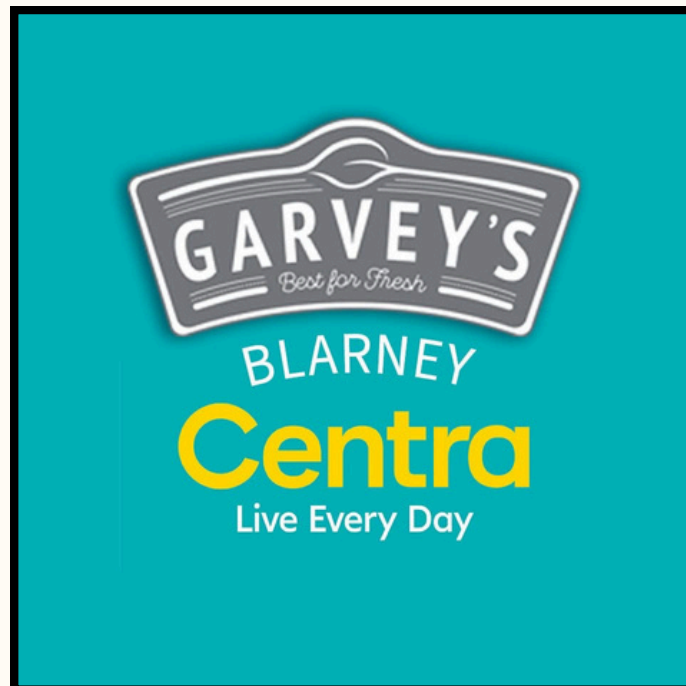




# *Garvey's Centra Blarney (BFS) Visual Guide*



## Visiting Garvey's Centra in Blarney

This guide will help you know what to do and what to expect when you visit our shop.

Some of the locals call our shop 'The BFS'  
(Blarney Filling Station)



Arriving at the shop

When you arrive, you can park in the designated parking areas. The shop entrance is located near the fuel pumps.



Outside our shop you will find:

- Fuel Pumps

Inside our shop you will find :

- A hot & cold Deli
- A bakery
- Coffee machines
- An off-license
- An ATM Machine
- A restroom for customers



## Entering the shop

You can go through the doors into the shop.

The doors are automatic and will open as you approach.

They may make a sound when they open.



## Seeing the staff

You might see staff who are here to help. They will be happy to see you and can answer your questions. Our staff have completed autism awareness training to better assist all customers.



## The shop layout

Inside the shop, you will see a coffee station, some fridges and a deli area. Further down, you will see aisles with items for sale. You can take your time and look around. The cashdesk, where you pay, is located at the front of the store on your way out.



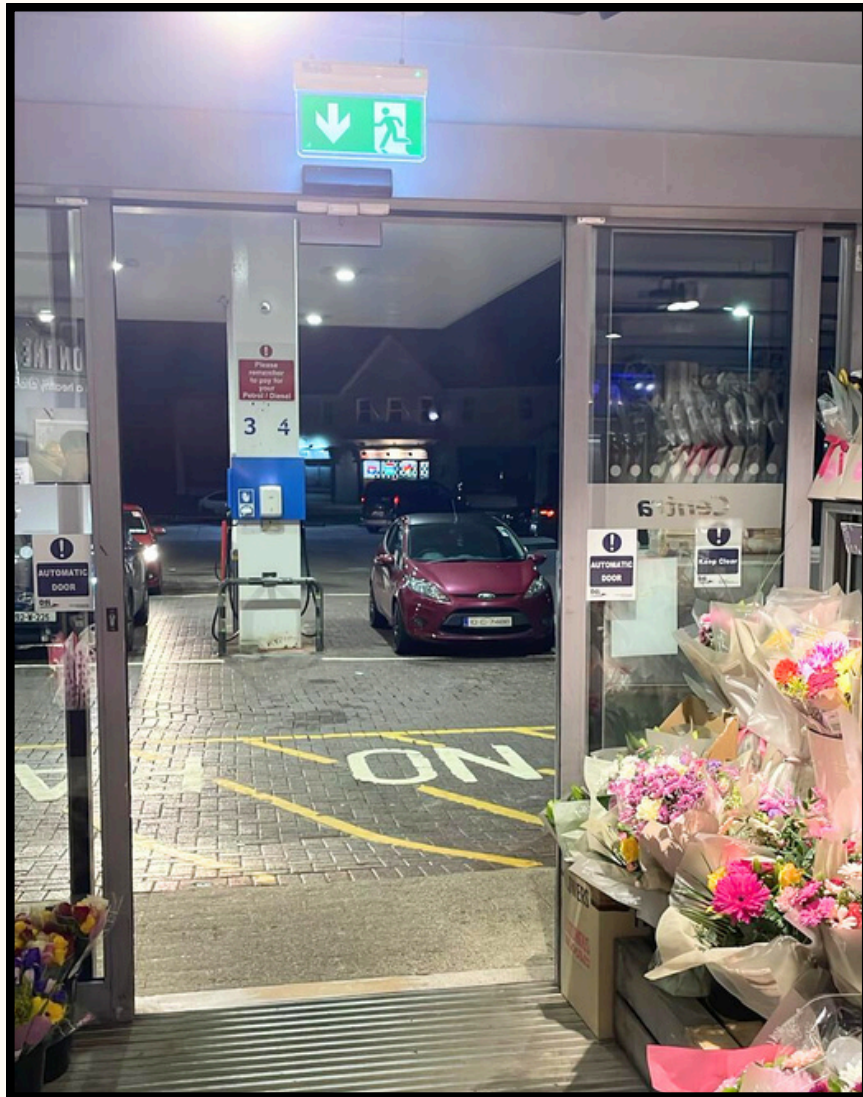
## Shopping

If you can't find something, you can ask a staff member for help. They will be wearing a uniform or a name badge. You can use your preferred method of communication, and our staff will do their best to assist you. Our staff will be patient and understanding



## Checking Out

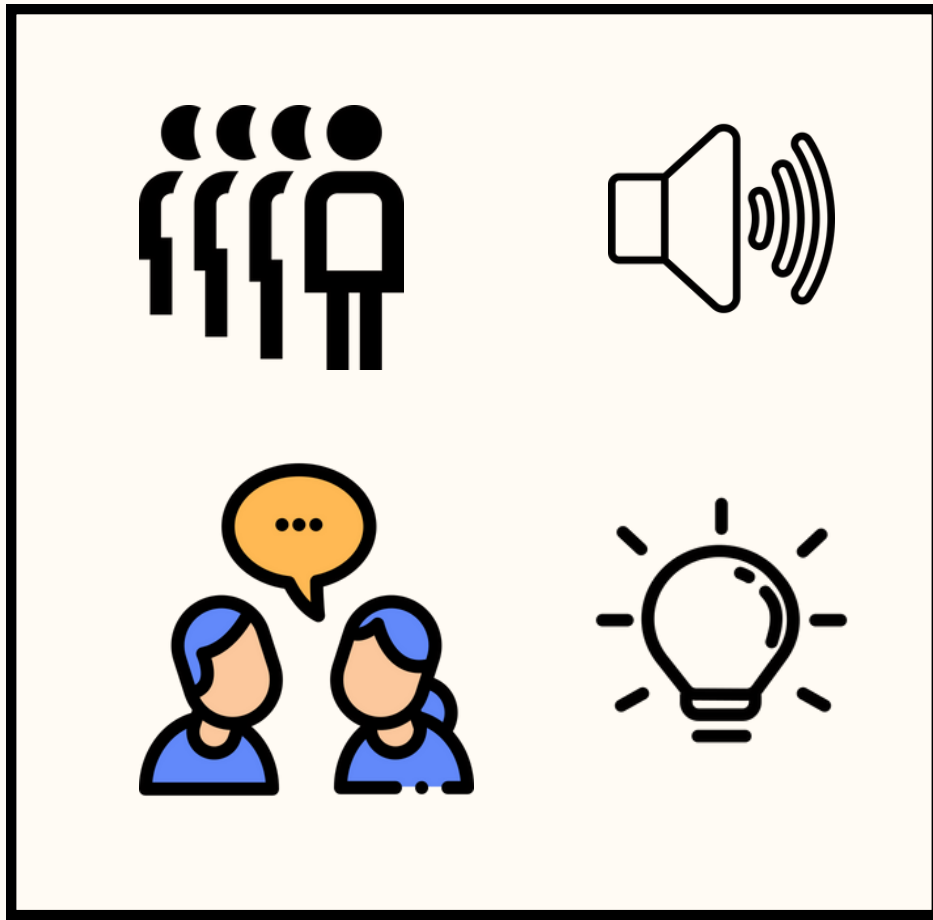
When you are done shopping, you can go to the checkout counter. You can pay with cash, card, or contactless payment



## Leaving the Shop



When you are finished you can leave the shop through the same doors that you came in.



## Sensory Information

- There may be other people queuing to pay for items
- Customers and staff may be talking out loud
- The doors make a sound when opening.
- We do play music in the shop.
- Tills make a beeping sound
- The hand dryer in the bathroom may be loud if activated
- Fridge lighting is not fluorescent to reduce glare.
- Aisles with fridges and freezers can be colder and may have a continuous hum



## Sensory Friendly Shopping Hours

This shop has a sensory-friendly hour on Tuesdays between 19:00 and 20:00. This includes...

- Trained staff who have completed AsIAm training
- We do not play music and till noises are lower.
- Essential basics are at the front of the store.
- There are no fluorescent lights in our fridges.
- Our staff are committed to patience and understanding.

We hope that this visual guide was helpful.  
If you have any feedback or recommendations on  
how we can improve this visual guide - please  
email:

[autismfriendlyblarney@gmail.com](mailto:autismfriendlyblarney@gmail.com)

or

[blarney@garveyscentra.ie](mailto:blarney@garveyscentra.ie)

Thank you!

