



Blarney Wellness Centre Visual Guide



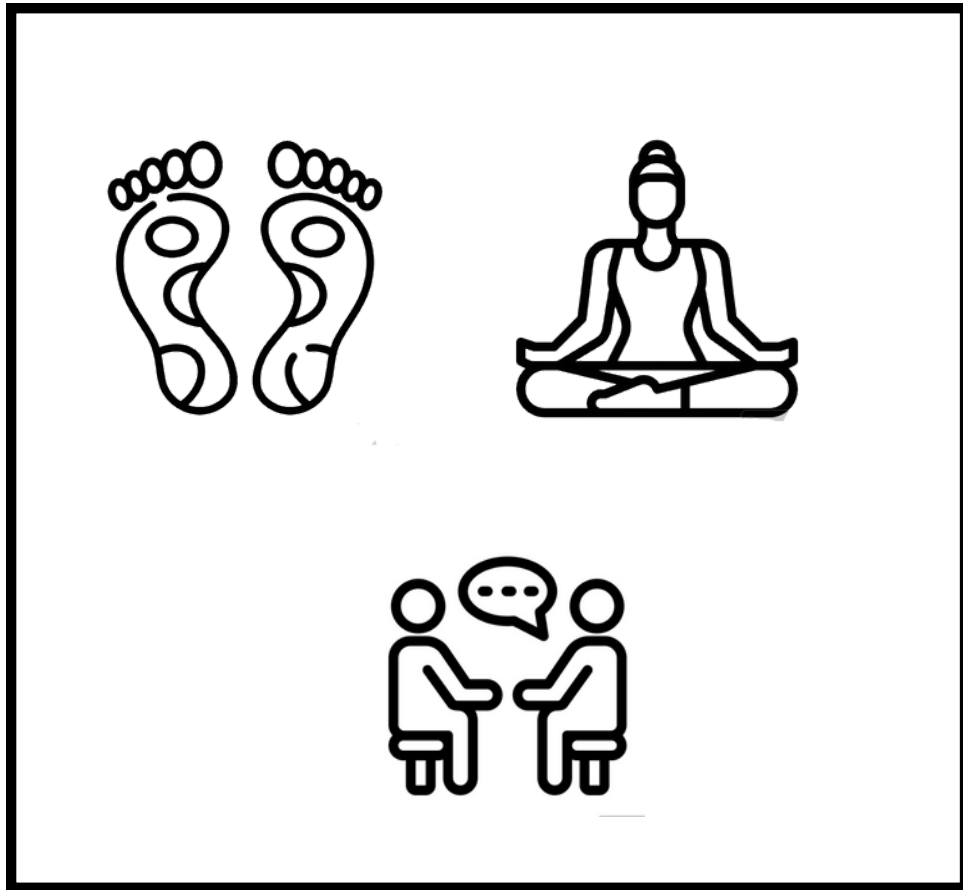
This guide will help you know what to do and
what to expect when you visit Blarney
Wellness Centre



Arriving



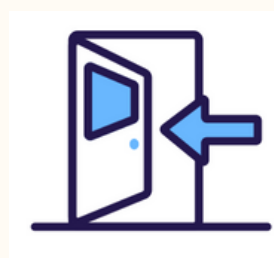
Blarney Wellness Centre is located in Ashdale House next to the Blarney Filling Station. There is parking available outside the door.



You may visit Blarney Wellness centre for clinical reflexology, yoga, meditation, speech and language therapy, or psychotherapy.

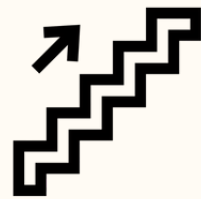
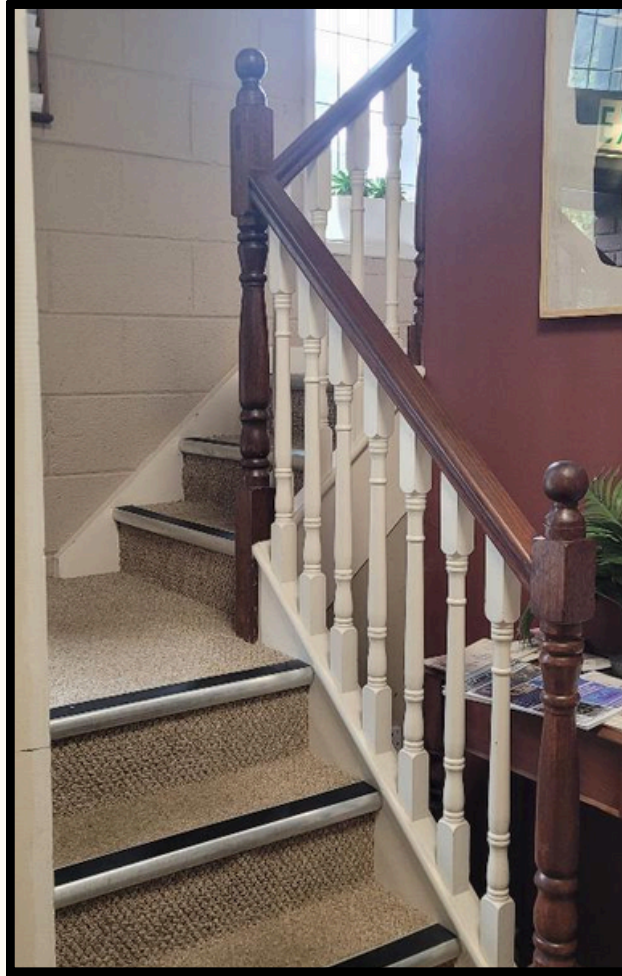


Entering



There is a sign at the entrance to the door with "Blarney Wellness Centre".

.

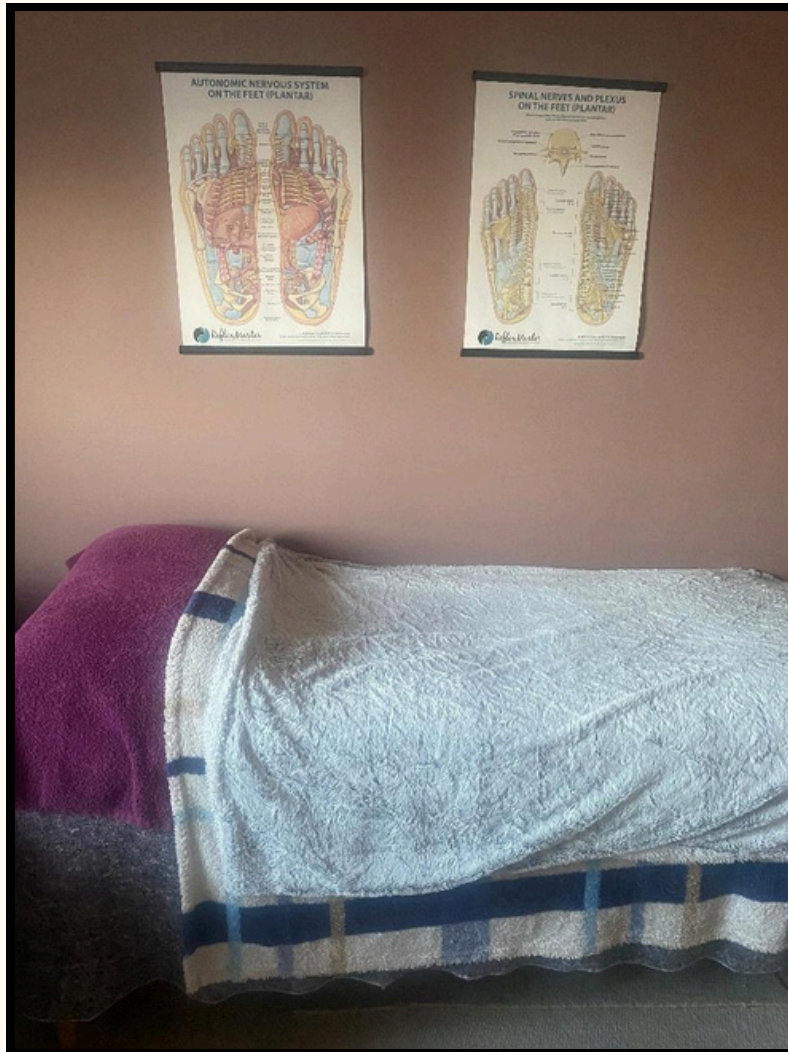


Upon entering this doorway, you will need to go up the stairs.



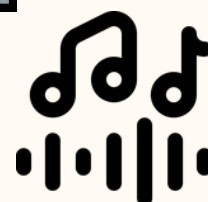
You can then wait in the waiting corridor
until you are called.

It's possible there may be other people in
the waiting area but it's usually quiet.



Our treatment room is spacious and has a treatment bed in it. Depending on what you are attending the centre for, you will either be using the bed or the seating area.

If you need to use the toilets, Pat will show you where they are.



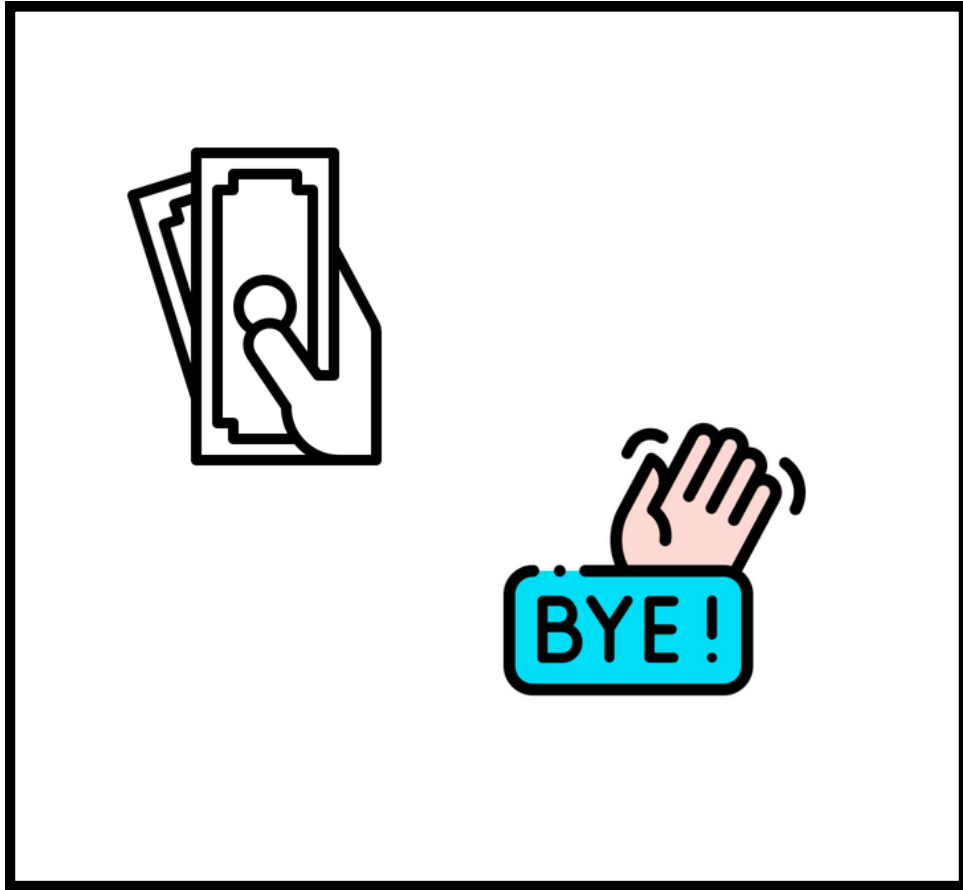
There is usually gentle music playing in the room.
This can be turned off if you prefer.

For reflexology, organic creams are used and
there is an option of unscented or scented
cream.



Pat who runs Blarney Wellness has completed many courses on working with autistic clients.

She will try to make you as comfortable as possible.



Finishing Your Visit

When you are finished, Pat will let you know what you need to pay.

You exit by going down stairs are out the same door you came in.

For any questions or to request accommodations,
contact Pat at 087 972 1149

or

blarneywellness@gmail.com

We hope you have found this visual guide helpful.

Thank you!

