



Blarney Castle Hotel Visual Guide



Visiting Blarney Castle Hotel

This guide will help you know what to do and what to expect when you visit.



Arriving



There is overnight parking for guests at the rear.
There is 2 hours of free street parking in front of
the Hotel, and on nearby streets, between
8.30AM - 6.30PM
The street can be busy so watch out for moving
cars and coaches.



Arriving at the Reception

The reception area is to the right as you enter the hotel.

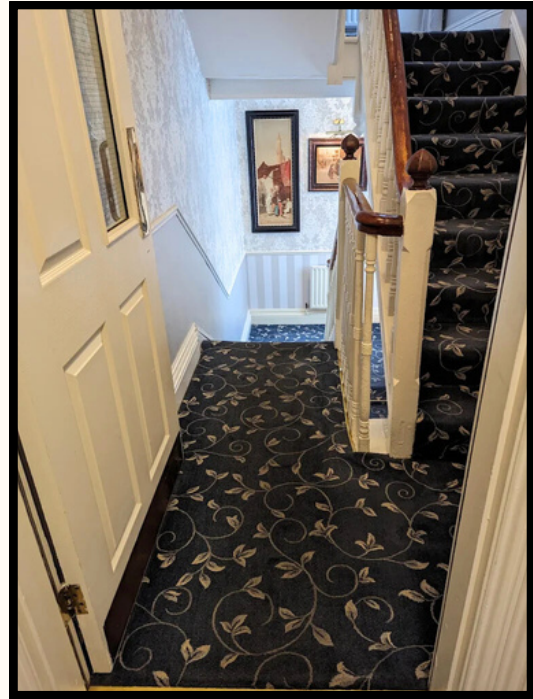
There are comfortable chairs to sit on while you wait your turn to speak to reception or for your room to be available to you.



Checking In



The staff will take your booking details.
If you need anything specific, please let them
know. They will be more than happy to assist.
They will give you a room key.



Going to your room



The hotel does not have an elevator - you will need to walk up the stairs to get to your bedroom. Staff will be happy to help you with your bags.



Inside your Room



There are many different types of rooms.
You will find one or more beds, with your own
private bathroom.
Your room will be comfortable and clean.

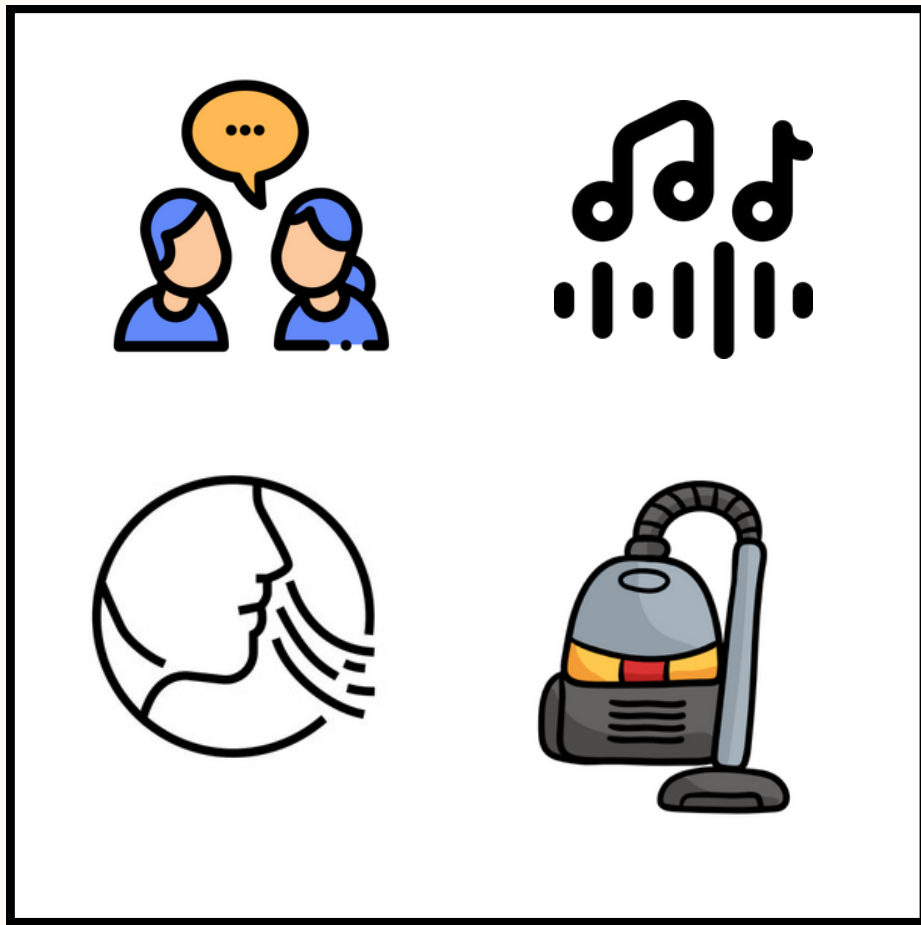


Assistance



There will be a guide in the room with more information about the hotel

If you need help, you can contact reception using the phone in your room.

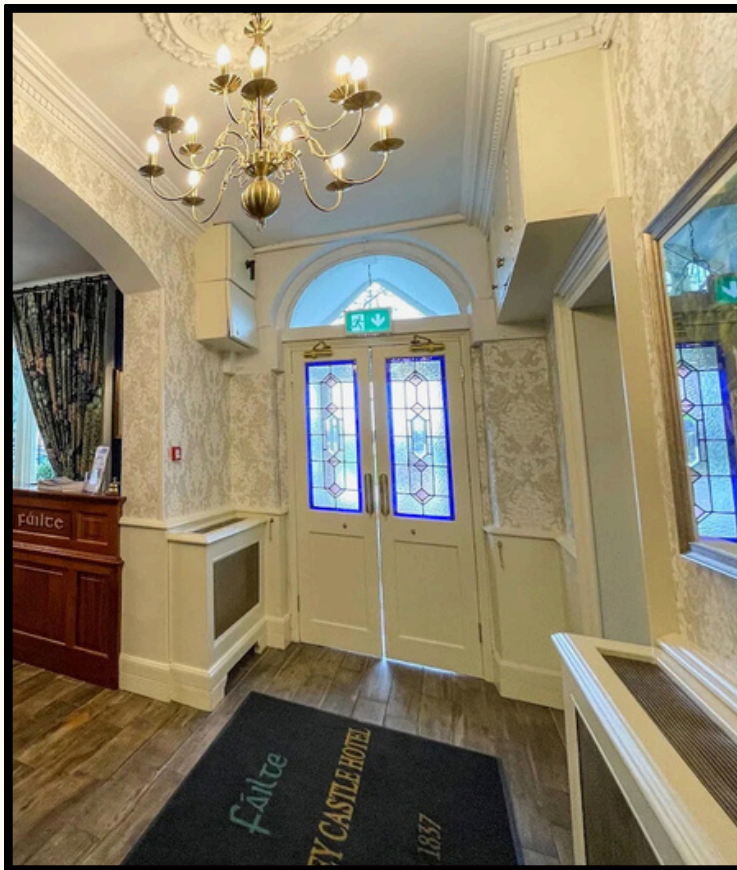


Sensory Information

The hotel might be noisy with people talking in the halls and doors closing.

You may hear traditional music playing from the bar.

It might smell like cleaning products or food.



Checking out



When your stay with us ends and you are leaving the hotel, you can check out at reception.

You can return your room key. If you need help with anything you can ask our staff.

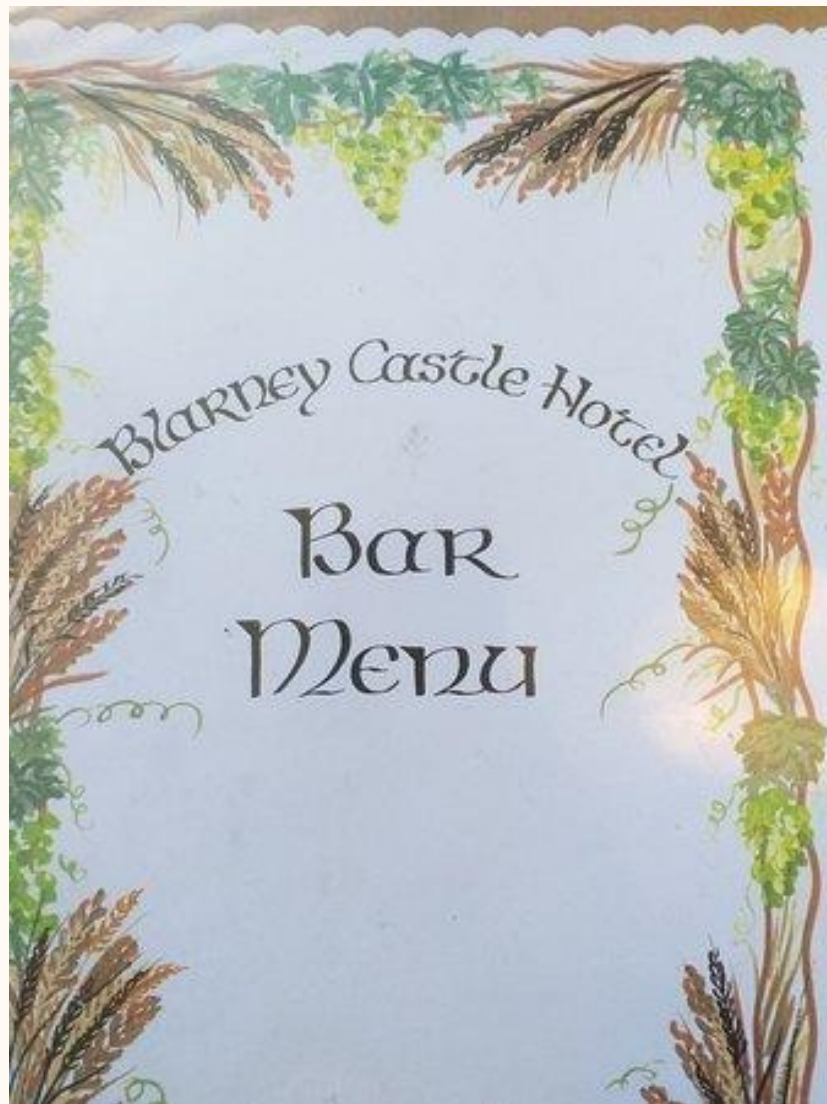
You can leave through the front doors.



Eating & Drinking at Blarney Castle Hotel

Breakfast, lunch and dinner are served daily from
7.30am - 9.30pm

You can dine in either the bar or restaurant.



You can use the menu to choose what you would like to eat or drink.

You can tell the waitress if you have any allergies, intolerances or preferences. They will be happy to accomodate you where possible



Johnny's Bar



Johnny's bar on the left at the front entrance of the hotel.

The bar serves food and drinks.

The bar can be very busy and plays traditional Irish music often.



The Killowen Room & Restaurant

This is a large function room.
It also has a full bar and restaurant area.
This room is spacious.
You may be more comfortable eating and
drinking here.



Toilets



Customer toilets can be found near reception.
They are through the entrance on the right
before the stairs.

We hope that this visual guide was helpful.
If you have any feedback or recommendations on
how we can improve this visual guide - please
email:

autismfriendlyblarney@gmail.com
info@blarneycastlehotel.com

Blarney Castle Hotel: (021) 438 5116

Thank you!

