



Blarney Woollen Mills Store Visual Guide



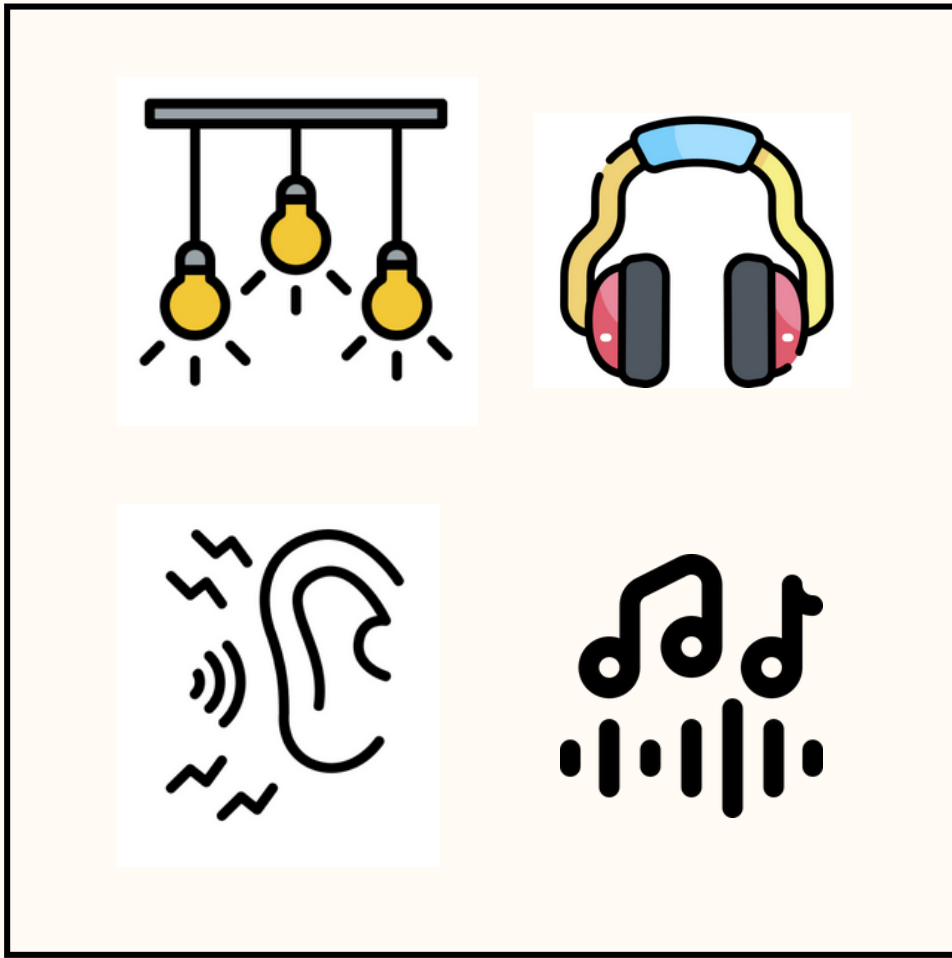
Visiting Blarney Woollen Mills Store

This guide will help you know what to do and what to expect when you visit.



Arriving

There is a car park in front of the Store.
The car park is busy, watch out for moving cars
and coaches.
You can enter through the double doors.



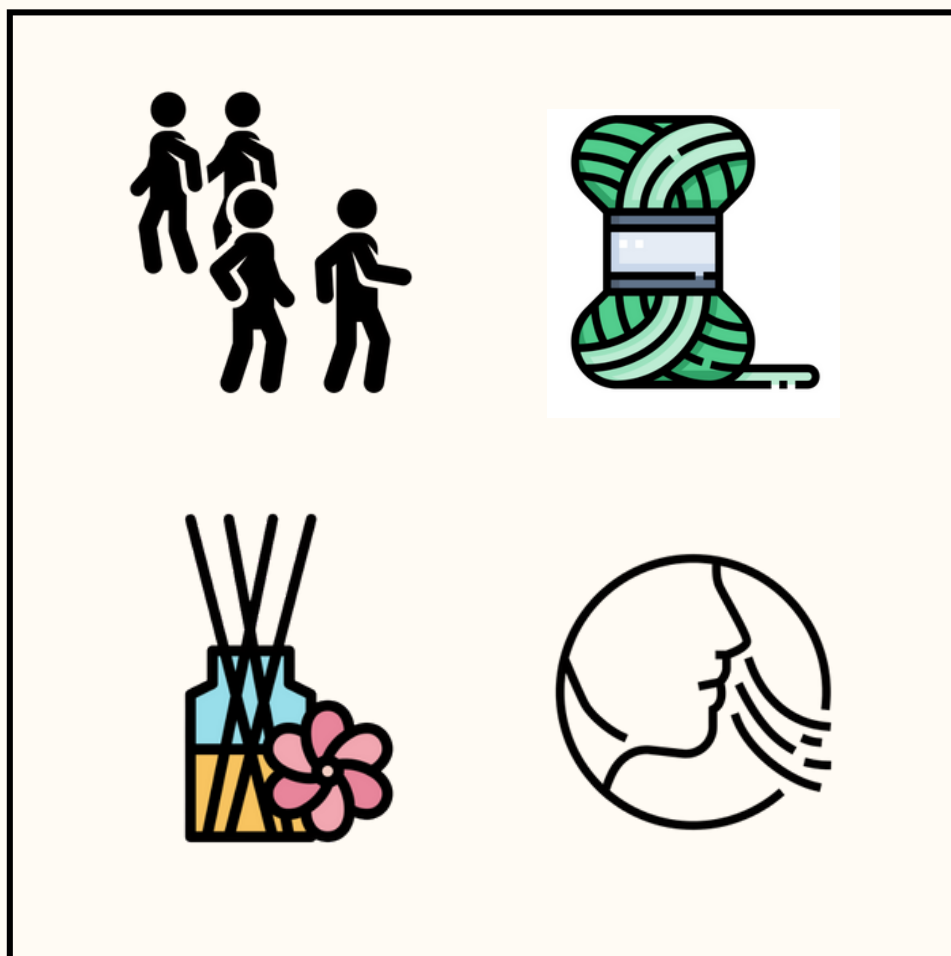
Sensory Information

Outside the entrance to the store, you will hear loud traditional Irish music playing.

Inside the store, there is also music playing.

You might hear customers speaking.

Inside, the ceilings are high with bright lights.

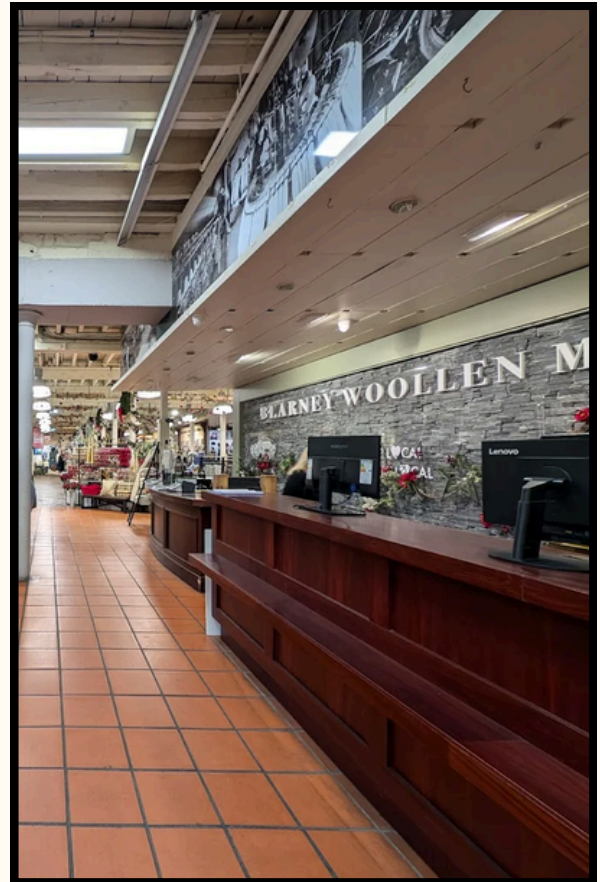


Sensory Information

The store can be busy with staff and customers walking around.

The store is full of colourful items.

You might smell wool and scented products in certain areas.



You can enter through the automatic doors.
They will make a wooshing sound.

You will enter the lobby with large customer
service desk. You will see staff here.

They can help you with anything you need.



The store has three floors.
You can take the elevator up and down.

Alternatively, you can use the stairs.

The elevator is at the entrance to the store. The stairs is in the center of the store.

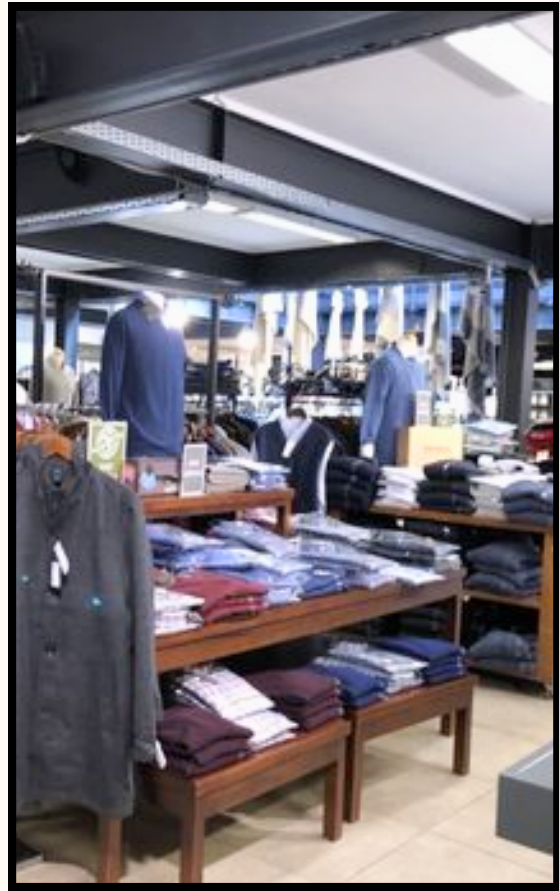


The ground floor has lots of traditional Irish souvenir items, clothing, jewelry and more.

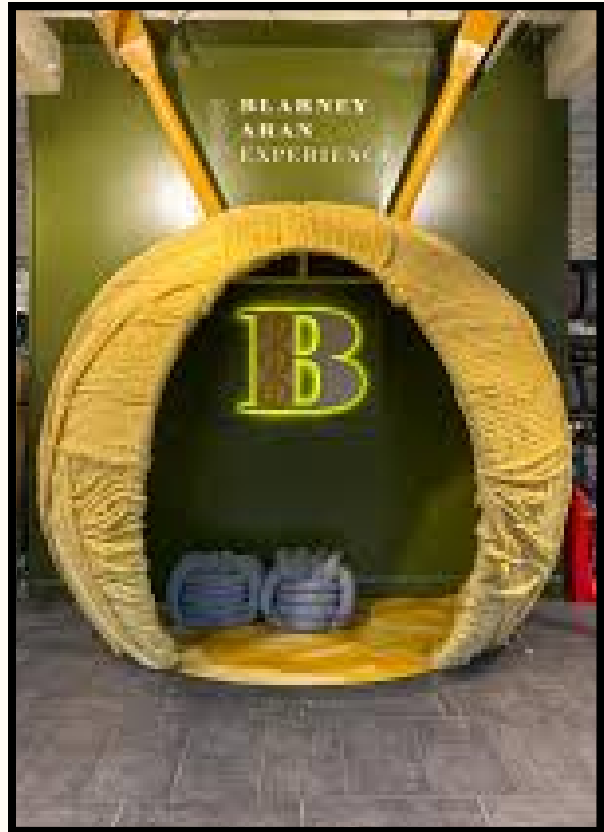


There is a children's section on the ground floor where they sell clothing, books and toys.

There is a table here for children to take a break and do some colouring.



The second floor has gentlemen's clothing and athleisure clothing and a special wool



The Blarney Aran experience is on the second floor.

Here you can customise your own aran jumper. You can add your family name and watch your item be created by staff.



There are fitting rooms on the second floor.

If you would like to try on items of clothing, you are welcome to use them.

You will find customer toilets on the second floor.



The third floor is home to the
‘Meadows and Byrne’ shop.

You will find homewear, gifts, furniture, beauty
and fragrance.

You might sense different smells.



Each floor has a checkout desk.
Staff here can answer any questions you have.
You can pay for your items here.

You can pay for your items by cash or card.



When you are finished shopping you can exit through the same doors that you came in.

We hope that this visual guide was helpful.
If you have any feedback or recommendations on
how we can improve this visual guide - please
email:

autismfriendlyblarney@gmail.com
jsheehan@blarney.com

Thank you!

