



O'Leary's Centra Blarney Visual Guide



Visiting Centra in Blarney Village

This guide will help you know what to do and what to expect when you visit our shop.



Arriving at the shop

There is parking on the roads in front of Centra, and around the village.

Be careful of cars and coaches travelling on the road.



Inside our shop you will find :

- A hot & cold Deli
- A bakery
- A Coffee machine
- An off-license
- An ice cream counter
- A seating area
- An ATM Machine
- A customer toilet
- Self-checkout & staffed checkouts



Entering the shop

You can go through the doors into the shop.

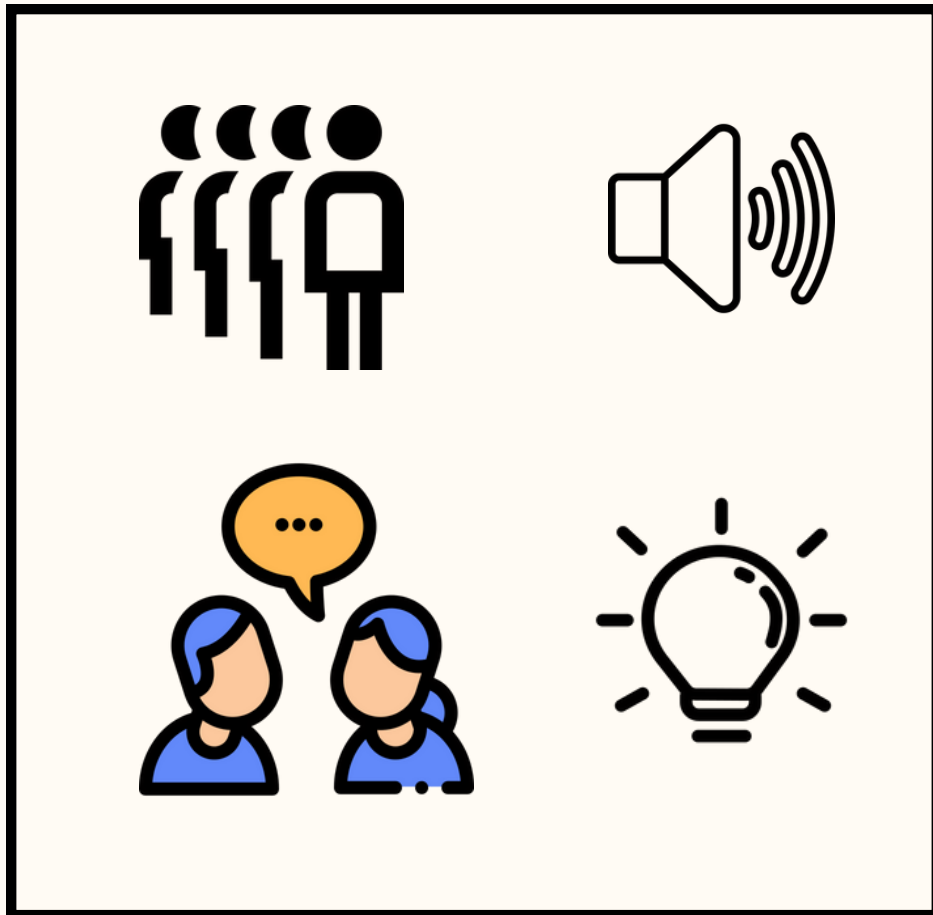
The doors are automatic and will open as you approach.

They may make a sound when they open.



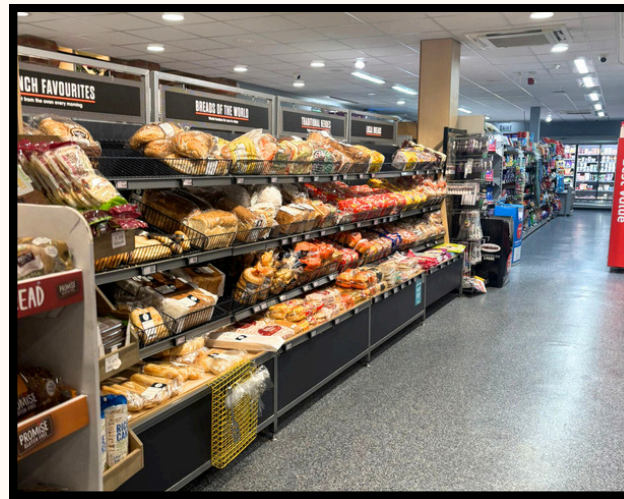
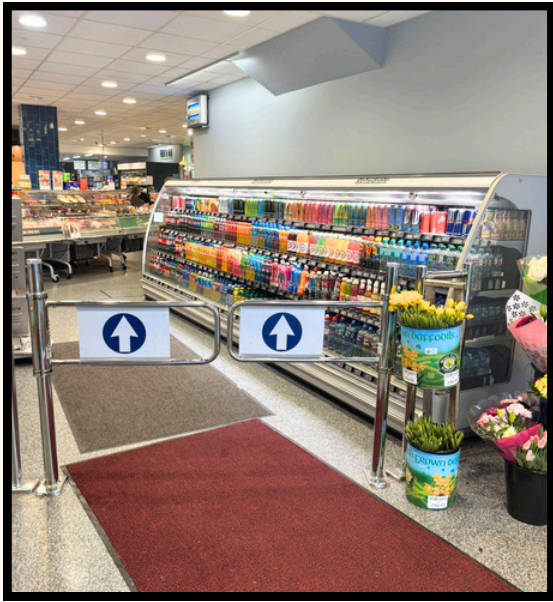
Seeing the staff

You might see staff who are here to help. They will be happy to see you and can answer your questions. Our staff have completed autism awareness training to better assist all customers.



Sensory Information

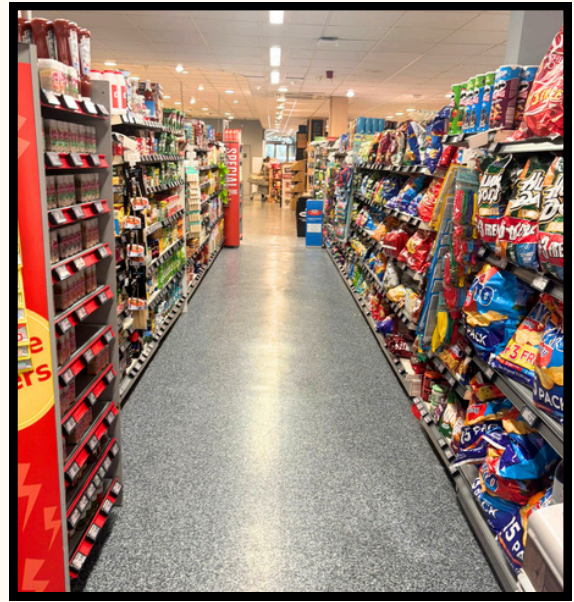
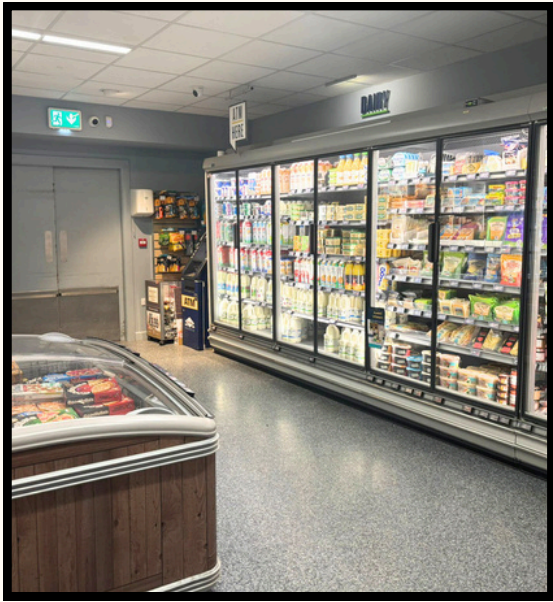
- There may be other people queuing to pay for items
- Customers and staff may be talking out loud
- The doors make a sound when opening.
- Low music is playing music in the shop.
- Tills make a beeping sound
- Fridge lighting is bright
- Aisles with fridges and freezers can be colder and may have a continuous hum



The shop layout

As you enter you will see flowers, magazines and a refrigerator with drinks.

Next you will find a coffee machine, bakery section, and deli counter serving hot and cold food.



At the rear of the store you will find more refrigerators, freezers and grocery aisles.

There is a reverse vending machine for bottles and cans.

.



There is an ATM at the back of the store.

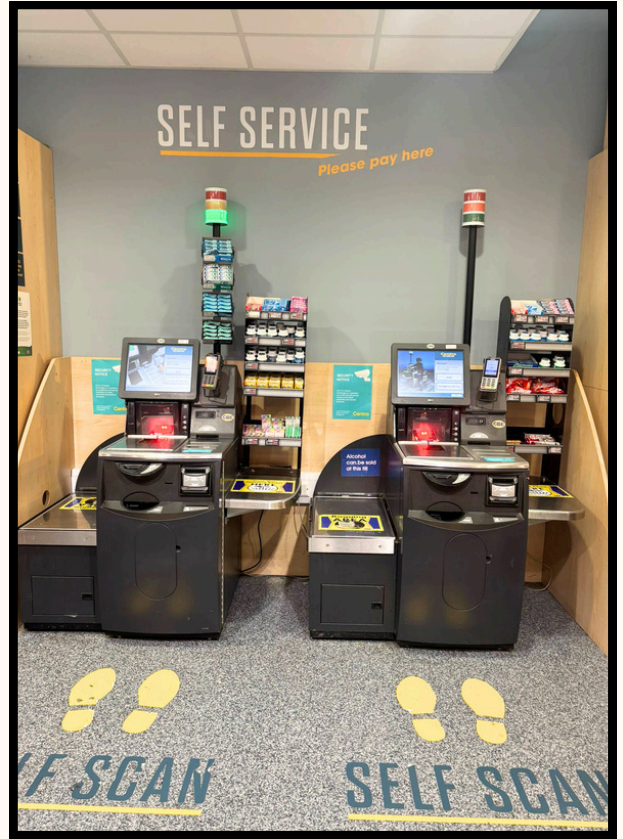
There is an off licence, with customer toilets next to it.



Shopping

If you can't find something, you can ask a staff member for help. They will be wearing a uniform or a name badge.

You can use your preferred method of communication, and our staff will do their best to assist you.



Checking Out



When you are finished shopping, you can go to the self checkout, or the staffed checkout counter.

You can pay with cash, card, or contactless payment



Ice Cream Counter



You can order an ice cream at the ice cream counter. The menu is on the wall. You can tell the staff what flavours you would like and they will make it for you.



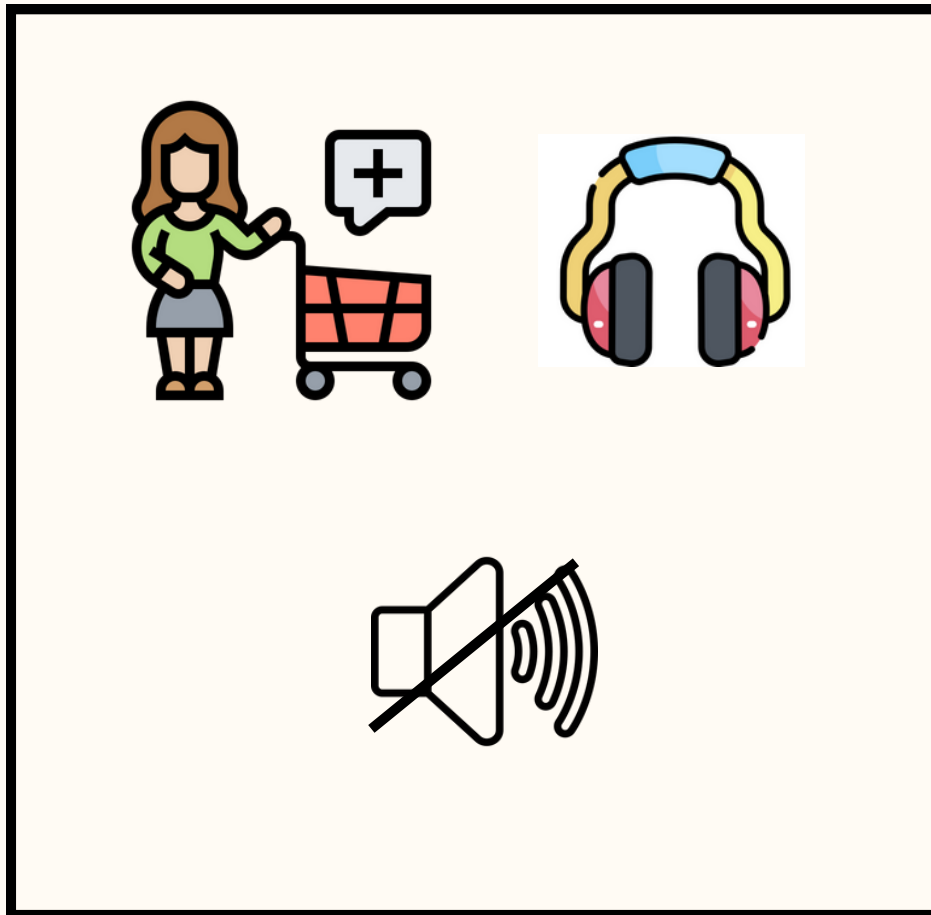
You are welcome to have a seat to rest or enjoy your coffee/ice cream/food in the seating area at the front of the store.



Leaving the Shop



When you are finished you can leave the shop through the same doors that you came in.



Sensory-Friendly Shopping Hours

This shop has a sensory-friendly hours on Wednesdays between 6:00pm and 8.00pm. This includes...

- Trained staff who have completed AsIAm training
- No music and till noises are lower.
- No fluorescent lights in the fridges.

We hope that this visual guide was helpful.
If you have any questions or specific requests
please call Centra on
(021) 438 5571

Thank you!

